

# Stepwise approach for Metals GES



# Step A. Data gathering

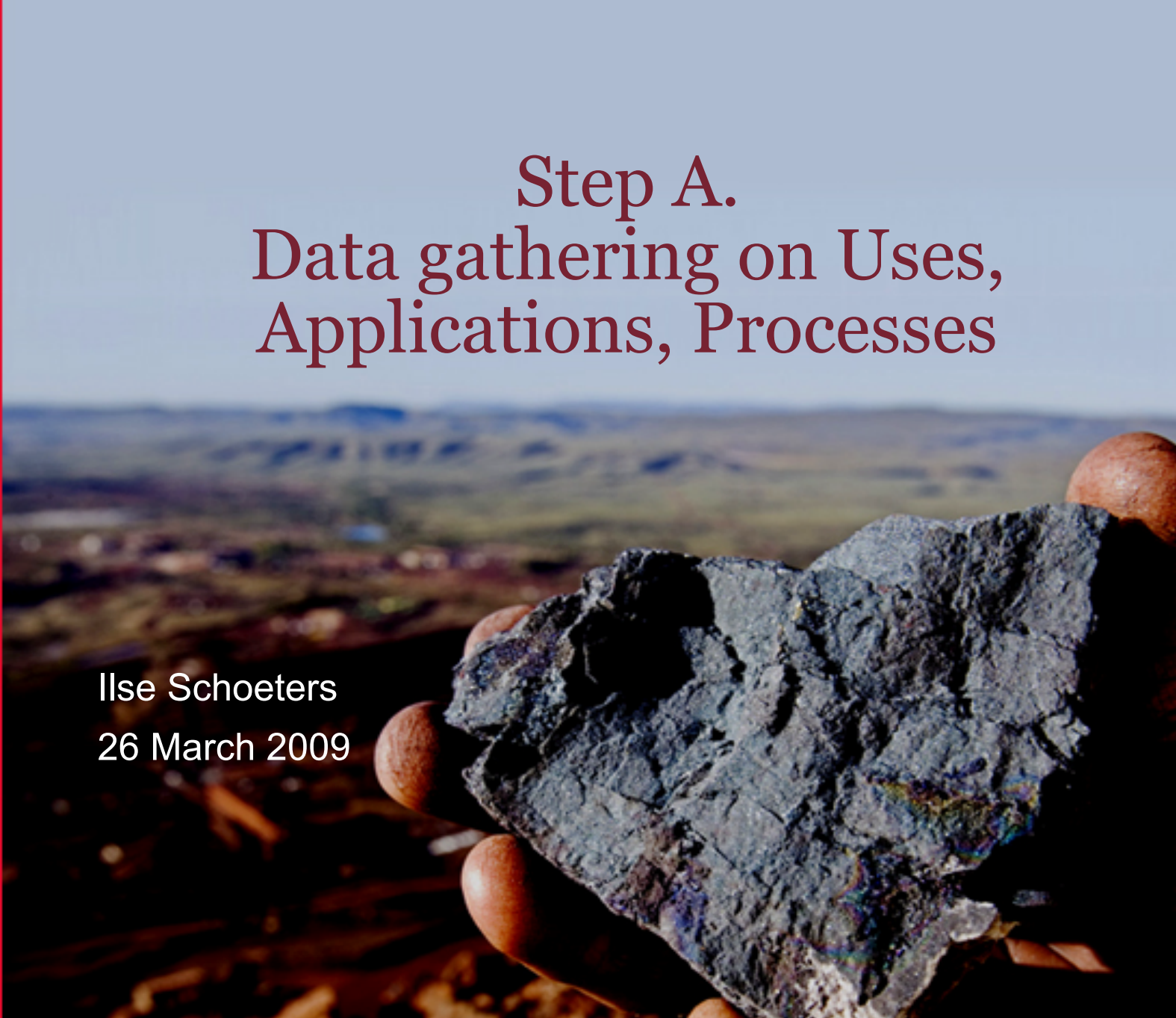
Collect information on manufacture, uses, applications, processes, operational conditions, risk management measures, exposure

Aim: know and 'map' the lifecycle of your metal/metal compound



## Step A. Data gathering on Uses, Applications, Processes

Ilse Schoeters  
26 March 2009



# Data gathering on Uses, Applications, Processes (1)

- Assume Company X, producing Metal M, a member of Consortium M
- Consortium meeting scheduled to identify scope of exposure scenarios of registration dossier
  - Collection of first info from members (M/I) using MMQ1-tailored
    - See next presentation**
    - Manufacturing processes
    - Uses, applications

# Data gathering on Uses, Applications, Processes (

- Company X: collection of in-house information on own **production processes**
  - with operations people, EHS people
  - Required information:
    - Description of the process
    - Description of potential/known exposures, emissions
    - Description of the exposure reduction measures for workers, for the environment
    - Match this with REACH Codes on Sector of Use, Product Category, Process Category → First exposure estimation.

👉 MMQ: Can look cumbersome, but

Take your time! It will save you a lot of time afterwards.

# Data gathering on Uses, Applications, Processes (3)

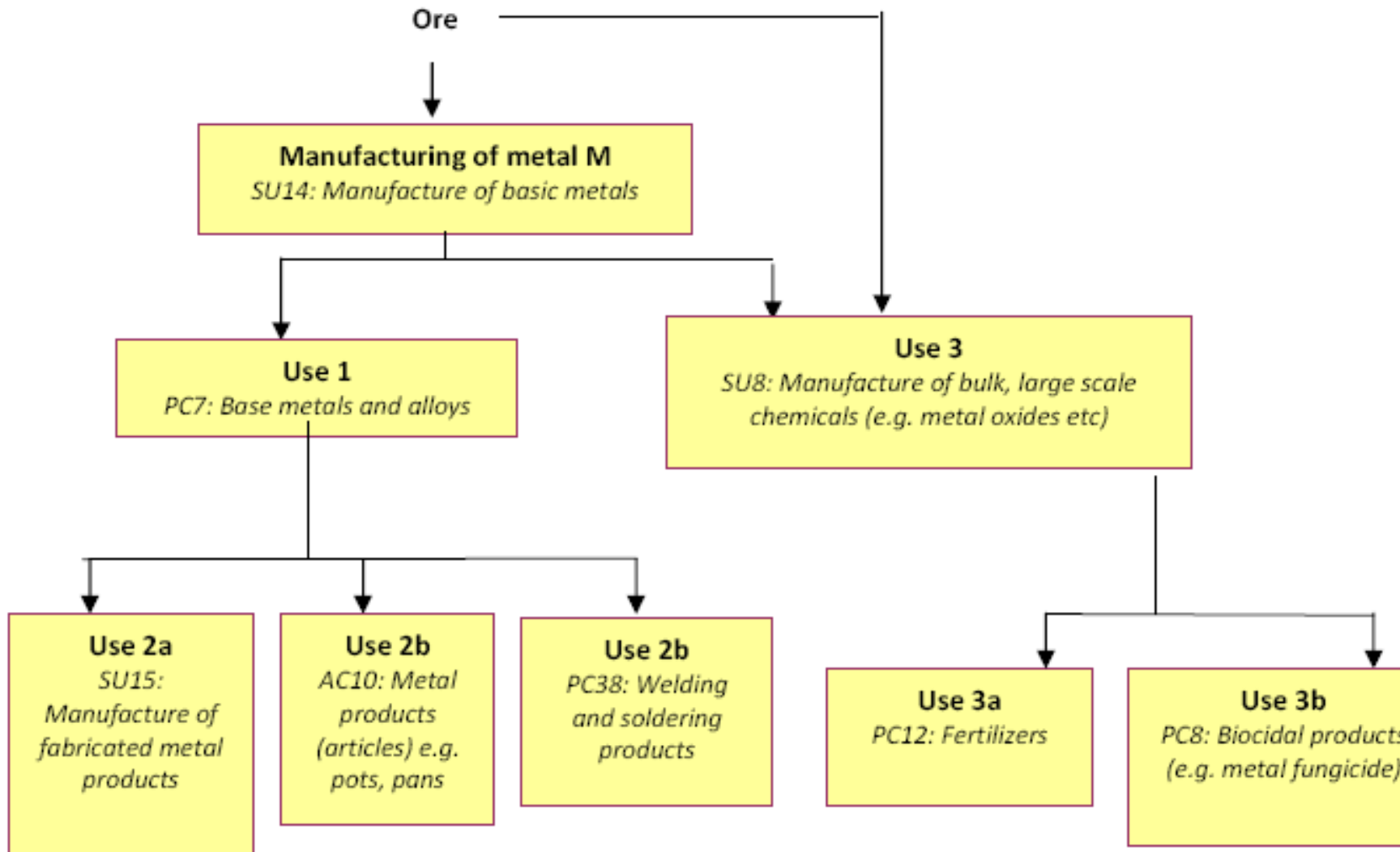
- Company X: collection of information on **uses, applications**
  - in-house with sales and marketing people, R&D department: DU-level 1
    - Required information:
      - Uses, applications
      - Customers and contact person
      - Sector association membership
    - Info to be sent to Consortium secretariat / trustee.
  - Outside, with your customers, traders, distributors: DU-level 2
    - Required info: as above
    - Info to be sent directly to Consortium secretariat / trustee.

+ Good description to prevent misunderstanding

# Data gathering on Uses, Applications, Processes (

- Consortium secretariat to make
  - List of manufacturing processes to be covered and descriptions
  - List of uses, applications to be covered
- Consortium (companies) to agree on
  - List of identified manufacturing processes
  - List of identified uses, applications
- Consortium secretariat to send MMQ1 to Sector associations covering the identified uses.
- Company M to follow-up with its customers to ensure necessary info will be provided

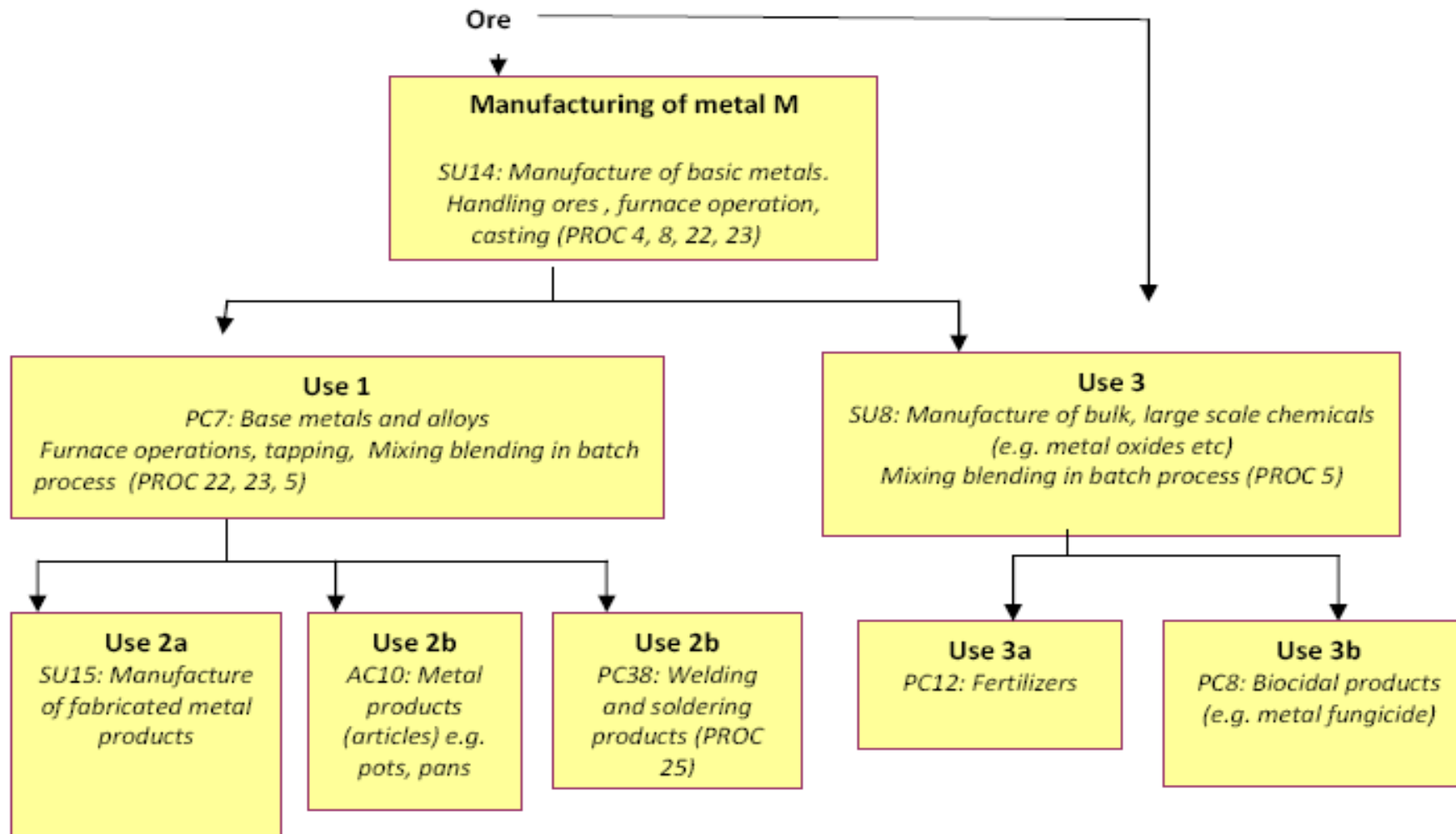
# Map Uses and Applications



# Data gathering on DU Processes

- Sector associations - DU
  - Distribution of MMQ1 to members
  - Members to fill in and send directly to Consortium secretariat
  - Required information:
    - Description of the **process**
    - Description of potential/known exposures, emissions
    - Description of the exposure reduction measures for workers, for the environment
    - Match this with REACH Codes on Sector of Use, Product Category, Process Category → First exposure estimation.

# Map Uses, Applications and Processes



**Let's take a look at the Multi-Metallic  
Questionnaire.**